

DBMoto® Cloud Edition™

Real-time Data Replication for Disconnected Databases



A BackOffice Associates, LLC Company

DBMoto® Cloud Edition™

DBMoto® is the preferred solution for heterogeneous **Data Replication, Change Data Capture and Data Transformation** requirements in an enterprise environment. Whether you are migrating data to a lower TCO database, synchronizing data among disparate operational systems, creating a new data warehouse or data mart environment for analytics, building a business intelligence application or creating a backup of key corporate data, DBMoto is the solution of choice for fast, trouble-free, easy-to-maintain data integration projects.

DBMoto® Cloud Edition enables organizations to move, share and update data between disconnected databases. If your business depends on data from multiple remote sites, you need a data replication solution that can provide the best Data Replication features and Change Data Capture functionality to support any major relational database in your system, as well as the ability to safely encrypt and transport data between firewalls. DBMoto Cloud Edition provides the necessary capabilities to securely share and update data among business systems located both inside and outside your firewalls.

DBMoto also provides an efficient visual interface, intuitive wizards and easy-to-follow guides, to help IT staff implement the toughest replication requirements quickly and easily. DBMoto is mature and approved by enterprises ranging from midsized to Fortune 1000 businesses worldwide.

Real-Time Data Replication and Change Data Capture

Refresh (snapshot) mode:

Reads data set, applies administrator-defined mapping rules, encrypts, transports, decrypts, and then writes the entire result to the target database.

Mirroring (CDC) mode:

One-way replication using CDC from source to target in real-time, based on transaction log management whenever possible. Captures and transmits changes as they happen on the source, and sends via web services to target systems.

DBMoto's Management Center console:

- Identifies and connects to multiple source and target databases
- Creates target tables
- Manages and controls access to replication configurations
- Sets up replication processes and groups them for efficient execution
- Stores replication mapping and rules in a metadata database
- Monitors replication processes, compares results, and analyzes issues
- Provides real-time information on replication status
- Records replication activity, performance, and errors into logs, to quickly spot and manage errors.

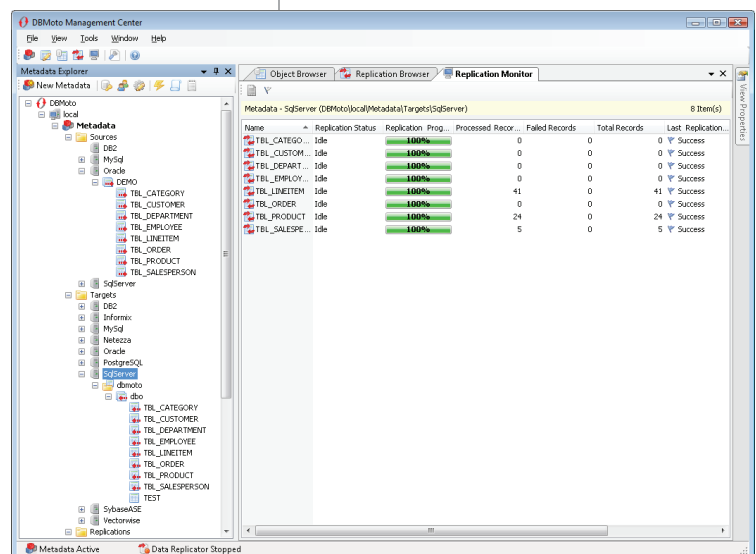
Powerful, Flexible, Configurable Change Data Capture!

DBMoto® does not require any programming on the source or target database platforms in order to deploy or run its powerful data integration features.

DBMoto provides all functionality in easy GUI and wizard-based screens; no stored procedures to develop; and no proprietary syntax to learn.

Databases Supported as Sources:

- IBM DB2 for i, AS400
- IBM DB2 for z/OS (OS/390)
- IBM DB2 LUW
- IBM Informix
- IBM Netezza
- Oracle
- Microsoft SQL Server
- MySQL
- Sybase ASE
- SQL Anywhere
- Ingres
- PostgreSQL
- Firebird
- Gupta SQLBase



Unmatched Replication and Transformation Control

With DBMoto®, users define data replication and transformations by applying built-in mapping and customized business rules.

Business rules can be applied through scripts which filter data or add business logic to a replication. They use automatically-generated events during a DBMoto replication. Scripting can perform source/target table lookups, append log activity, and update target tables. DBMoto also includes a powerful expression generator for interactive data transformation.

Databases Supported as Targets

IBM DB2 for i and AS400 V3R2 and later
IBM DB2 for z/OS (OS/390) v5 and later
IBM DB2 for Windows v5 and later
IBM DB2 for AIX, Linux, HP/UX, Solaris v5 and later
Oracle v8 and later
Microsoft SQL Server v6.5 and later

Databases Supported as Sources

IBM DB2 for i and AS400 V4R3 and later
IBM DB2 for z/OS (OS/390) v5 and later
IBM DB2 for Windows v5 and later
IBM DB2 for AIX, Linux, HP/UX, Solaris v5 and later
IBM Informix
IBM Netezza
Oracle v8 and later
Microsoft SQL Server v6.5 and later
MySQL v3.23 and later
Gupta Technologies SQLBase
Sybase ASE v12.50 and later
Sybase SQL Anywhere
PostgreSQL
Ingres
Firebird

System Requirements

DBMoto Cloud Edition needs to be configured with DBMoto, the Broker and the Configurator Components on the same system:

- PC with Windows operating system
- Internet access capability
- An accessible installation of Microsoft SQL Server for the Broker log
- .NET framework 2.0, 3.5 (with latest service pack), or higher
- .NET, OLE DB or ODBC connection to the source database to be used in replication

* Visit www.hitsw.com for more details

System Requirements (continued)

For the system running the DBMoto Web Service Component:

- PC with Windows operating system
- Microsoft IIS 6 or above
- Internet access capability
- .NET framework 2.0, 3.5 (with latest service pack), or higher
- An accessible installation of Microsoft SQL Server for the Web Service log
- ADO.NET connection to the target database to be used in replication

Note on Microsoft SQL Server: You need an accessible installation of SQL Server for both the Broker and the Web Service. Both the Broker and the Web Service write messages to a SQL Server log. The SQL Server connection is defined in the configuration file for each tool. The SQL Server installation can be available via a network. It does not need to be installed locally.

DBMoto Cloud Edition Key Features

PRODUCT INCLUDES

- DBMoto software package
- DBMoto Cloud Edition Components: Broker, Configurator and Web Service

DATABASE SUPPORT

- Support for the following databases as targets: IBM DB2 (all versions), Oracle, MS SQL Server
- Support for all major databases as sources: IBM DB2 (including IBM i/AS400, z/OS, Linux, AIX, Windows), Oracle, Microsoft SQL Server, MySQL, Sybase Adaptive Server Enterprise, SQL Anywhere, Ingres, Informix, Gupta Technologies SQL Base, PostgreSQL, and Firebird
- Support for database cluster environments
- Web service functionality for data transport outside firewalls
- Open APIs to integrate DBMoto into corporate architectures, or into third-party solutions]

REPLICATION SUPPORT

- Replication modes: Refresh (snapshot), Mirroring (change data capture)
- Extensive log reporting and accessibility
- Powerful visual tool for information on replication status and errors
- Built-in transformation functions, with custom functions definable at any time

USER SUPPORT

- User-friendly graphical interface
- Administrative wizards for fast, easy configuration and setup
- Configuration and management of entire replication process from DBMoto's GUI tools
- Remote administration of DBMoto Replicator through Management Center
- Customizable via Microsoft VB.NET scripting and event driven environment
- Extensive security including user authentication and other options
- No programming needed on source or target database platforms
- Source and target table access via standard .NET data provider protocol

REAL-TIME DATA REPLICATION · CHANGE DATA CAPTURE · HETEROGENEOUS DATABASE SUPPORT

HiT Software, Inc., A BackOffice Associates, LLC Company

T: +1 408.345.4001 F: +1 408.345.4899

info@hitsw.com www.hitsw.com

Copyright © 2013 HiT Software, Inc., A BackOffice Associates, LLC Company. All rights reserved. HiT Software®, HiT Software logo, DBMoto, DBMoto Cloud Edition and DBMoto Verifier are trademarks or registered trademarks of HiT Software and BackOffice Associates, LLC in the United States and other countries. All other trademarks are the property of their respective owners.

1002-11300-004_b



A BackOffice Associates, LLC Company

BackOffice
ASSOCIATES